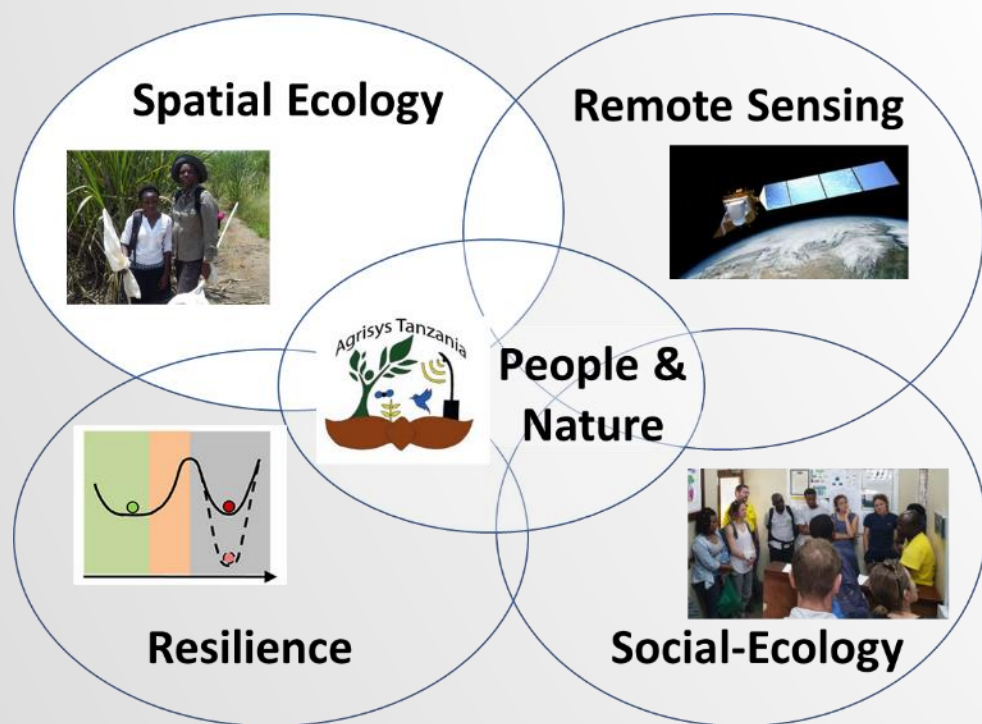


INTEGRATING SATELLITE DATA WITH HABITAT QUALITY, BIODIVERSITY AND SOCIAL DATA



Dr Marion Pfeifer,

PI of the TROPS lab

Reader, Landscape Ecology and
Management, Newcastle
University

Co-Director of Centre for Climate
and Environmental Resilience

To inform decision-making in forest-agricultural landscapes for on biodiversity, people & climate change mitigation and adaptation



Landscapes that my lab is working in



To inform decision-making in forest-agricultural landscapes for on biodiversity, people & climate change mitigation and adaptation

1. Predictive mapping of land use/forest cover and biodiversity distribution



Data:

- Landsat sensor data (30 m)
- Biodiversity data (20 m plots)
- Point surveys of habitat type

Models:

- Machine learning algorithms
- Cluster algorithms
- In house algorithms to characterize landscape configuration

To inform decision-making in forest-agricultural landscapes for on biodiversity, people & climate change mitigation and adaptation

1. Predictive mapping of land use/forest cover and biodiversity distribution
2. Mapping habitat quality (biomass, carbon, vegetation canopy closure) linking it to biodiversity and microclimate



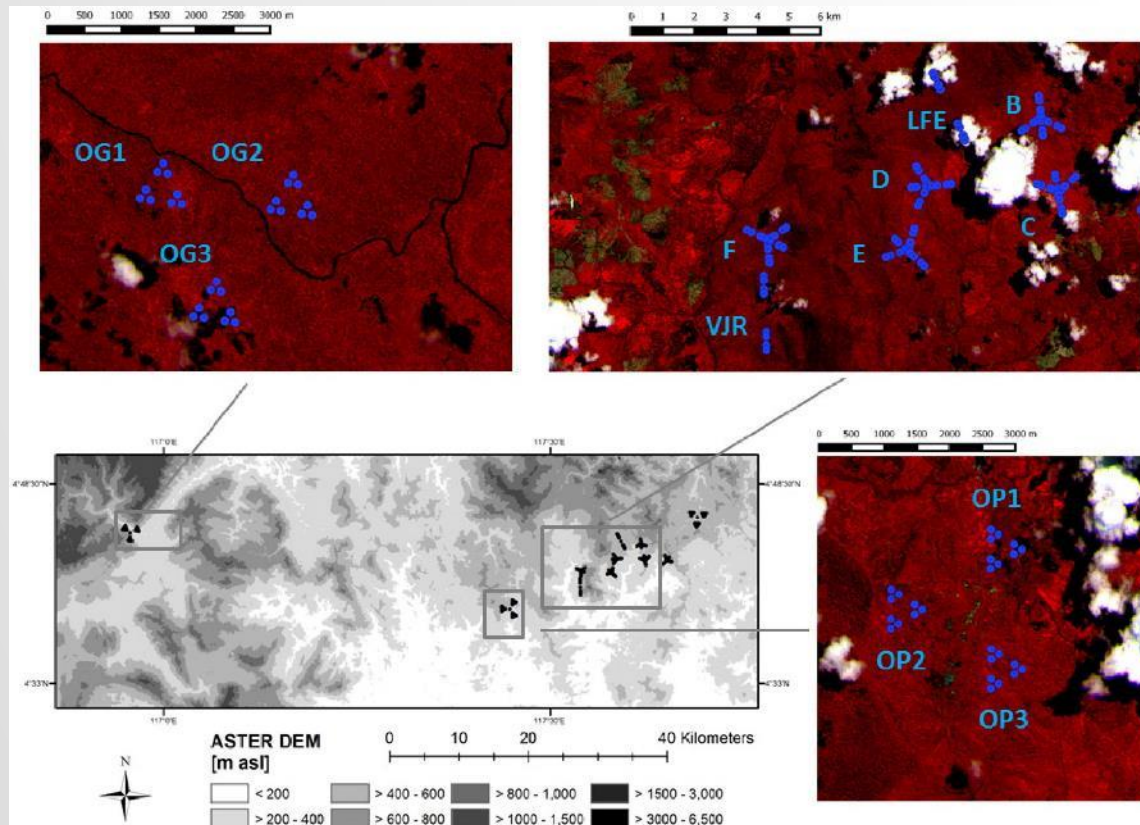
Data:

- High to moderate resolution satellite sensor data
- Microclimate data (20 m plots)
- Point surveys of habitat quality

Models:

- Machine learning algorithms
- Regression models

To inform decision-making in forest-agricultural landscapes for on biodiversity, people & climate change mitigation and adaptation












ELSEVIER

Remote Sensing of Environment

Volume 176, April 2016, Pages 84-97



Mapping the structure of Borneo's tropical forests across a degradation gradient

M. Pfeifer^a  , L. Kor^a , R. Nilus^b, E. Turner^c , J. Cusack^d , I. Lysenko^a ,
M. Khoo^a , V.K. Chey^b , A.C. Chung^b, R.M. Ewers^a 



ELSEVIER

Agricultural and Forest Meteorology

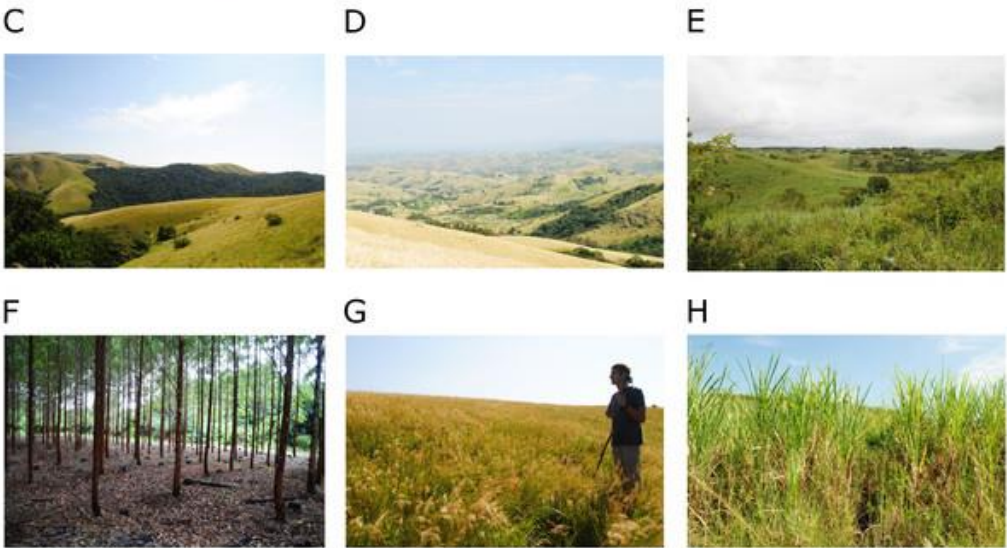
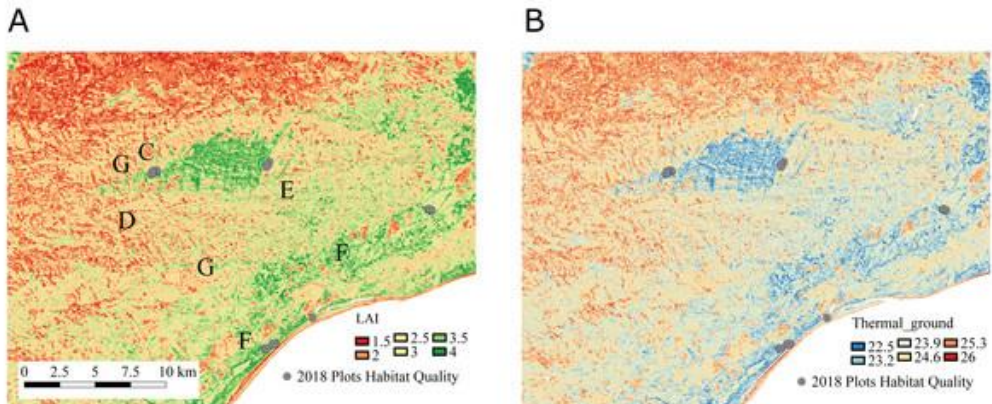
Volume 201, 15 February 2015, Pages 187-195



The relationship between leaf area index and microclimate in tropical forest and oil palm plantation: Forest disturbance drives changes in microclimate

Stephen R. Hardwick^a  , Ralf Toumi^a, Marion Pfeifer^b, Edgar C. Turner^c, Reuben Nilus^d,
Robert M. Ewers^b

To inform decision-making in forest-agricultural landscapes for on biodiversity, people & climate change mitigation and adaptation



PeerJ Life & Environment

< ENVIRONMENTAL SCIENCE

Forest floor temperature and greenness link significantly to canopy attributes in South Africa's fragmented coastal forests

View 15 tweets

Related research

Research article Ecosystem Science Climate Change Biology Forestry

Spatial and Geographic Information Science

Share

Twitter Facebook Email

Marion Pfeifer¹, Michael J.W. Boyle², Stuart Dunning³, Pieter I. Olivier⁴

Published January 10, 2019

PHILOSOPHICAL TRANSACTIONS OF THE ROYAL SOCIETY B

BIOLOGICAL SCIENCES

Open Access

Check for updates

View PDF

Tools Share

Cite this article

Research articles

A practice-led assessment of landscape restoration potential in a biodiversity hotspot

Abigail R. Willis[†], Deo D. Shirima, Olivier Villemaire-Côté, Philip J. Platts, Sarah J. Knight, Robin Loveridge, Hamidu Seki, Catherine E. Waite, Pantaleo K. T. Munishi, Herman Lyatuu, Blanca Bernal, Marion Pfeifer and Andrew R. Marshall[†]

Published: 14 November 2022 | <https://doi.org/10.1098/rstb.2021.0070>

And for evaluation of biodiversity conservation (and other) interventions

THE ROYAL SOCIETY PUBLISHING | All Journals

Home | Content | Information for | About us | Sign up | Propose an issue

PHILOSOPHICAL TRANSACTIONS OF THE ROYAL SOCIETY B

BIOLOGICAL SCIENCES

Open Access | Check for updates | View PDF

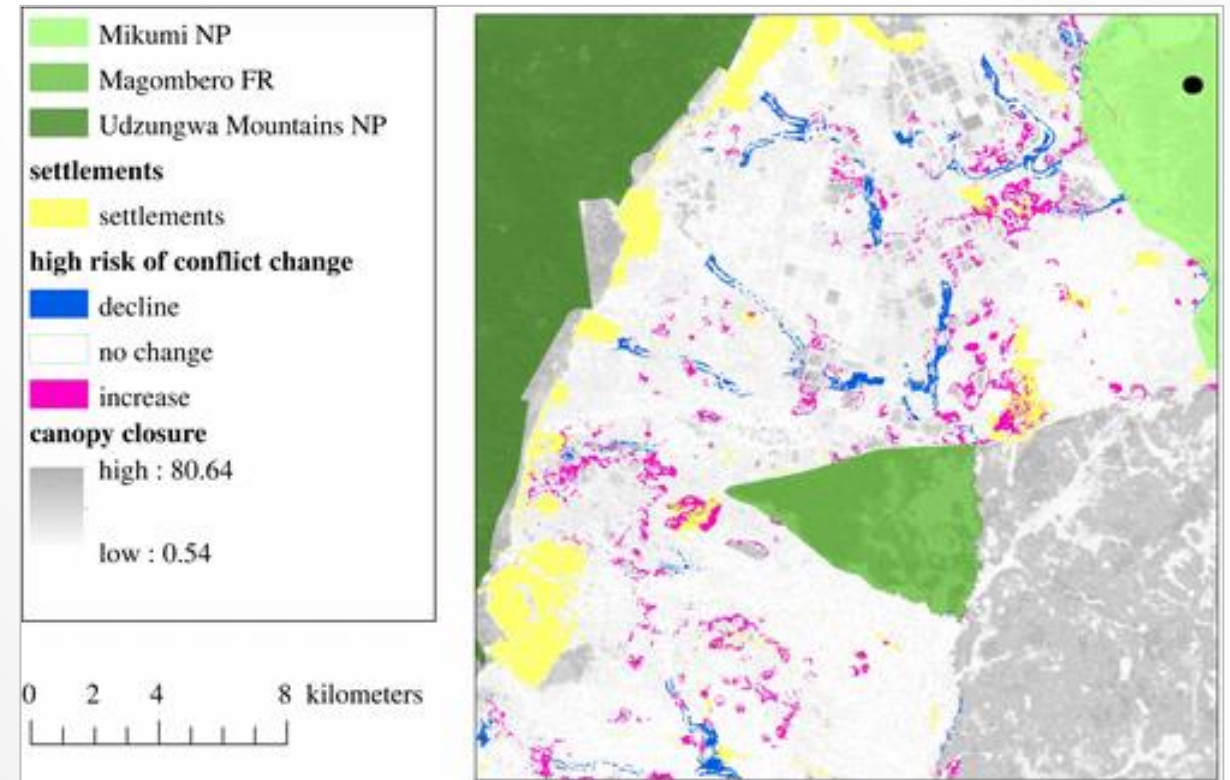
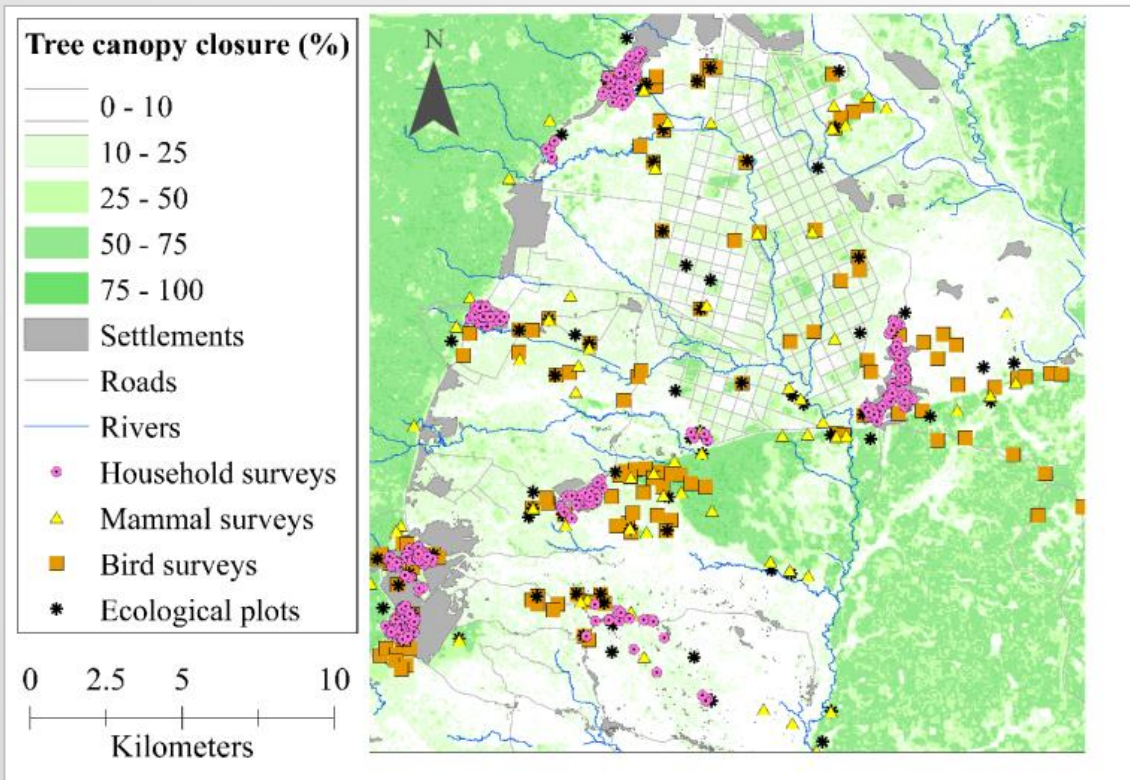
Tools | Share

Cite this article

Research articles

A systems approach framework for evaluating tree restoration interventions for social and ecological outcomes in rural tropical landscapes

Marion Pfeifer, Susannah M. Sallu, Andrew R. Marshall, Stephen Rushton



Evaluating for people, biodiversity and CCMA outcomes

nature communications

Explore content ▾ About the journal ▾ Publish with us ▾

[nature](#) > [nature communications](#) > [articles](#) > article

Article | [Open Access](#) | [Published: 21 June 2022](#)

Meeting sustainable development goals via robotics and autonomous systems

[Solène Guenat](#) , [Phil Purnell](#), [Zoe G. Davies](#), [Maximilian Nawrath](#), [Lindsay C. Stringer](#), [Giridhara Rathnaiah Babu](#), [Muniyandi Balasubramanian](#), [Erica E. F. Ballantyne](#), [Bhuvana Kolar Bylappa](#), [Bei Chen](#), [Peta De Jager](#), [Andrea Del Prete](#), [Alessandro Di Nuovo](#), [Cyril O. Ebi-Eromesele](#), [Mehran Eskandari Torbaghan](#), [Karl J.](#)

 **MONGABAY**
NEWS & INSPIRATION FROM NATURE'S FRONTLINE

RAINFORESTS OCEANS ANIMALS ENVIRONMENT BUSINESS SOLUTIONS FOR KIDS DONATE IMPACT MORE

Mongabay Series: [Global Forests](#)

Who decides on 'priorities' for ecosystem restoration?

by [John Cannon](#) on 2 November 2022      



ENVIRONMENTAL RESEARCH LETTERS

LETTER • **OPEN ACCESS**

Recognizing the equity implications of restoration priority maps

[Bill Schultz](#)^{13,1} , [Dan Brockington](#)^{2,3}, [Eric A Coleman](#)¹ , [Ida Djenontin](#)^{4,5}, [Harry W Fischer](#)⁶, [Forrest Fleischman](#)⁷, [Prakash Kashwan](#)⁸ , [Kristina Marquardt](#)⁶, [Marion Pfeifer](#)⁹, [Rose Pritchard](#)¹⁰ 

[+ Show full author list](#)

nature

Explore content ▾ About the journal ▾ Publish with us ▾

[nature](#) > [matters arising](#) > article

Matters Arising | [Published: 13 July 2022](#)

Restoration prioritization must be informed by marginalized people

[Forrest Fleischman](#) , [Eric Coleman](#), [Harry Fischer](#), [Prakash Kashwan](#), [Marion Pfeifer](#), [Vijay Ramprasad](#), [Claudia Rodriguez Solorzano](#) & [Joseph W. Veldman](#)

CORE TEAMS & PARTNERS



Natural England

