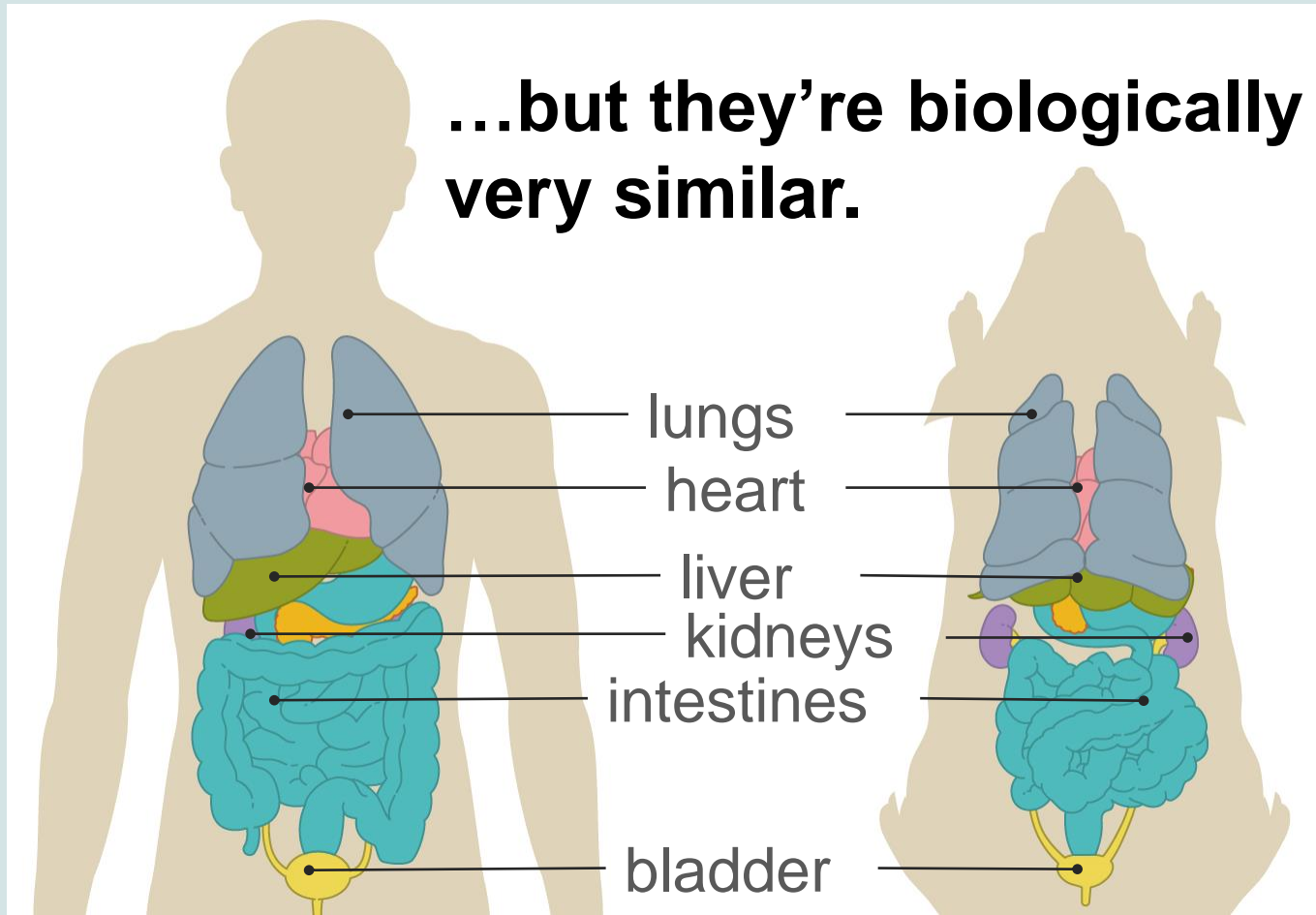


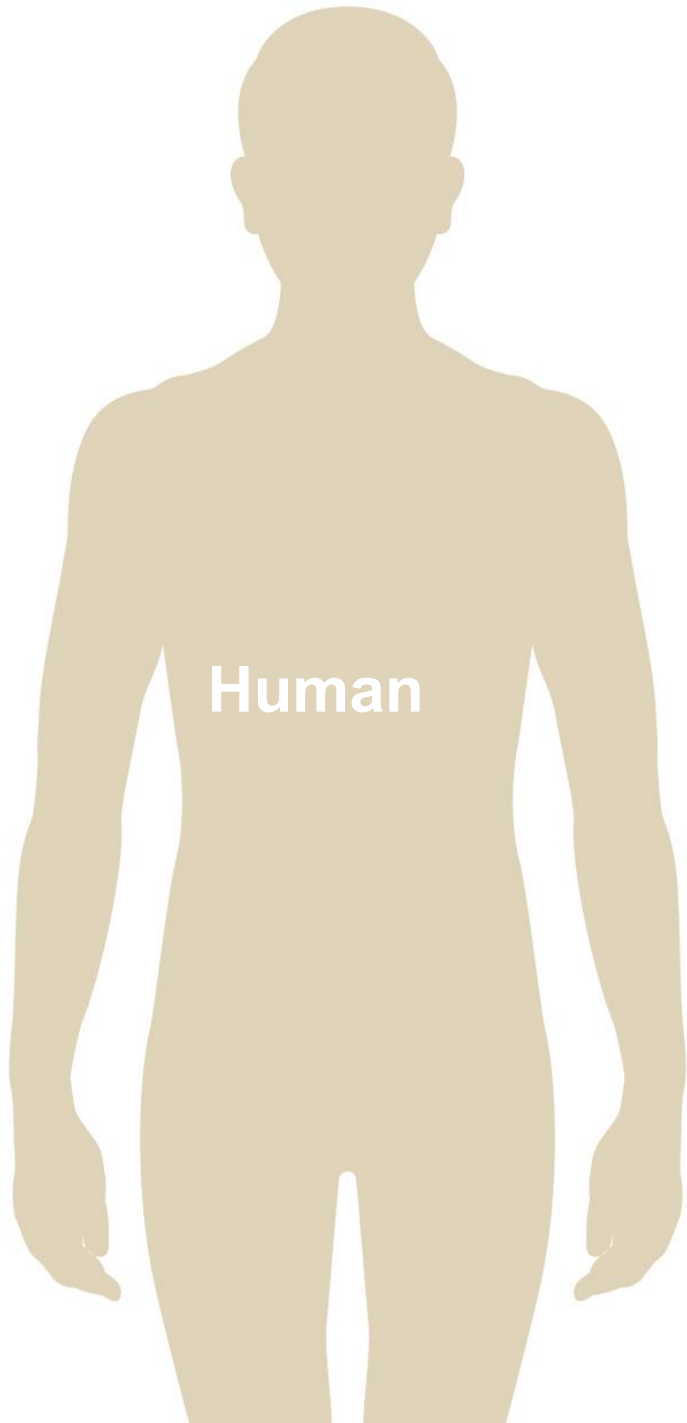
Comparative anatomy slides

- These slides make the point that humans and mice (in fact all mammals) are much more similar internally than they may appear. The labels for the internal organs can be removed to make this a more participatory exercise, asking students to volunteer the names of the organs as you progress.

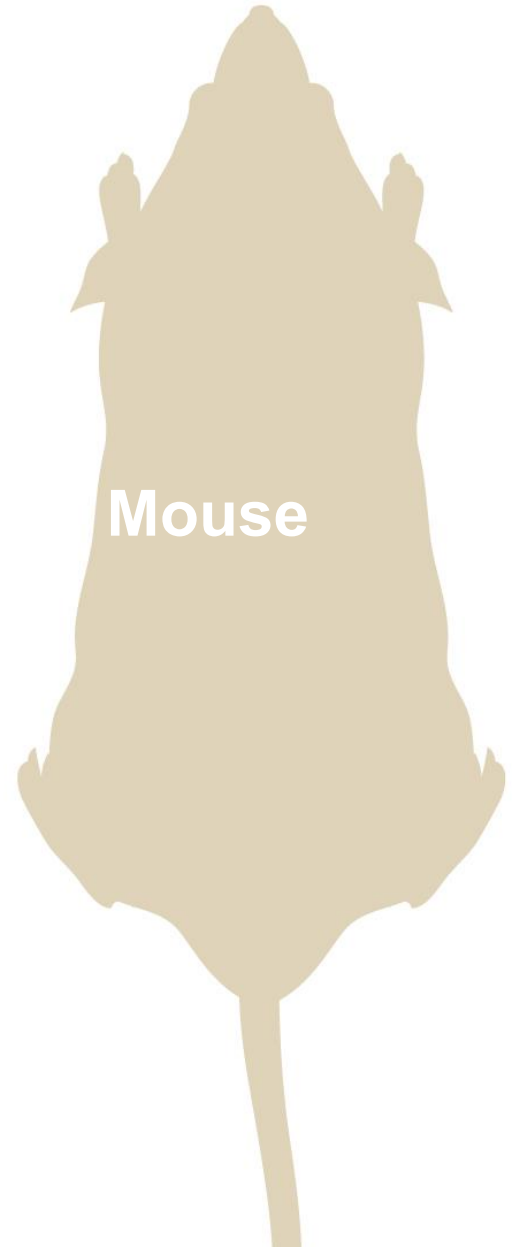
Animals aren't the same as humans...

...but they're biologically very similar.

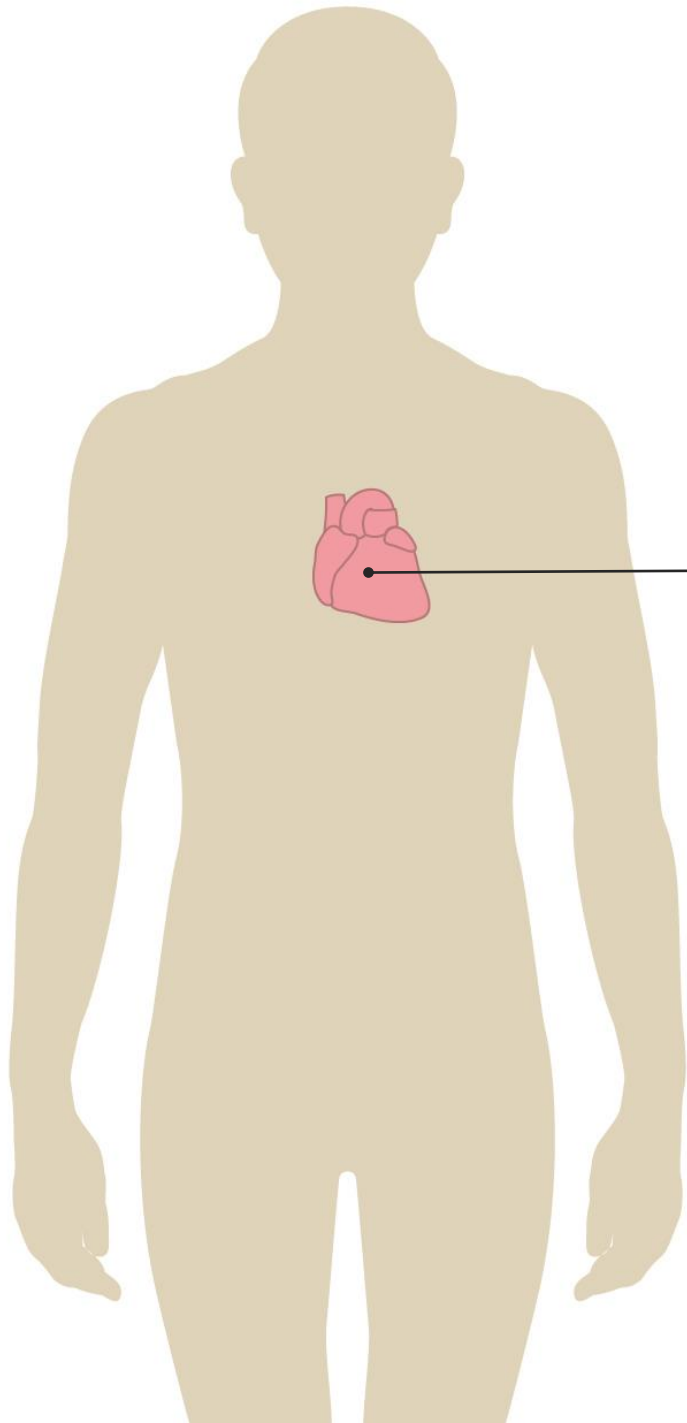




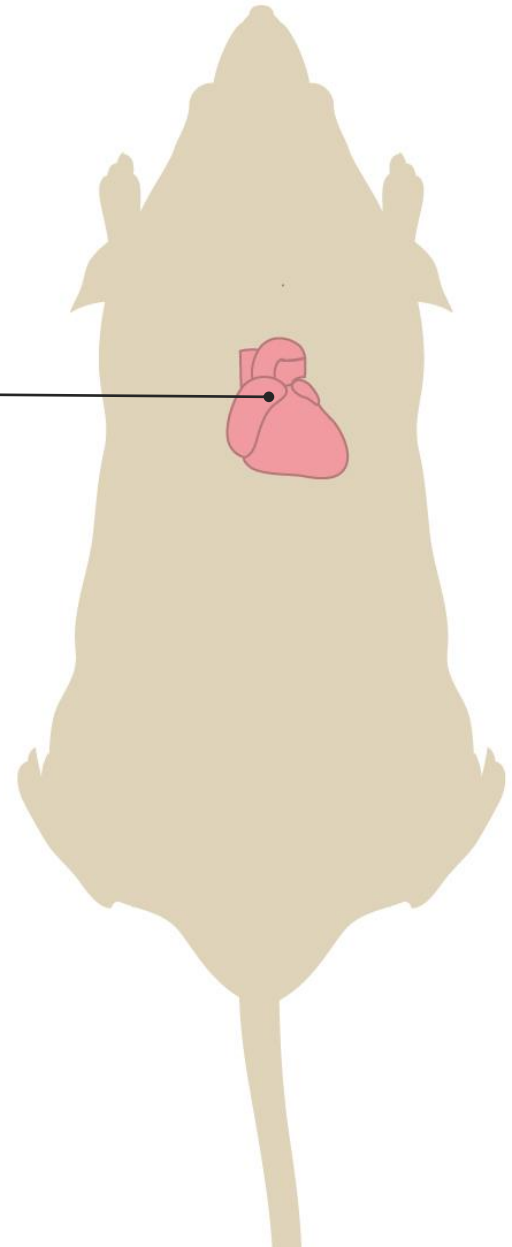
Human

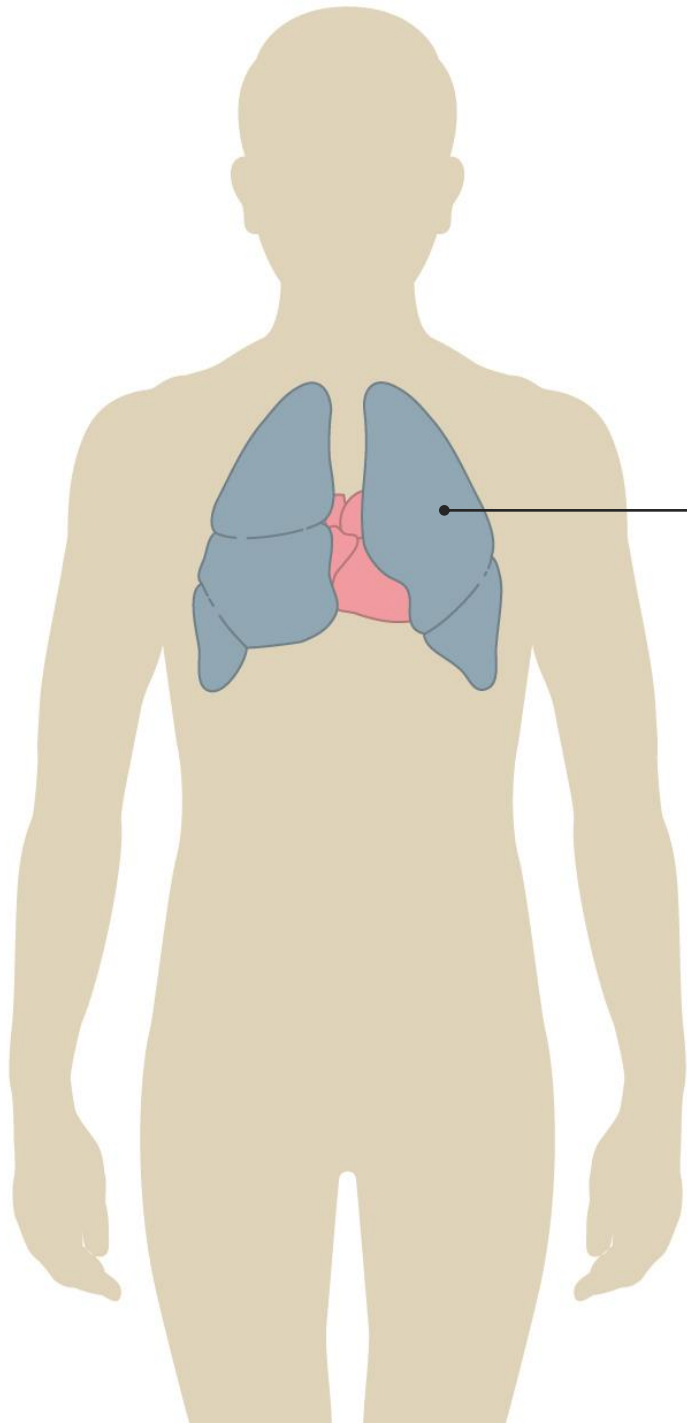


Mouse

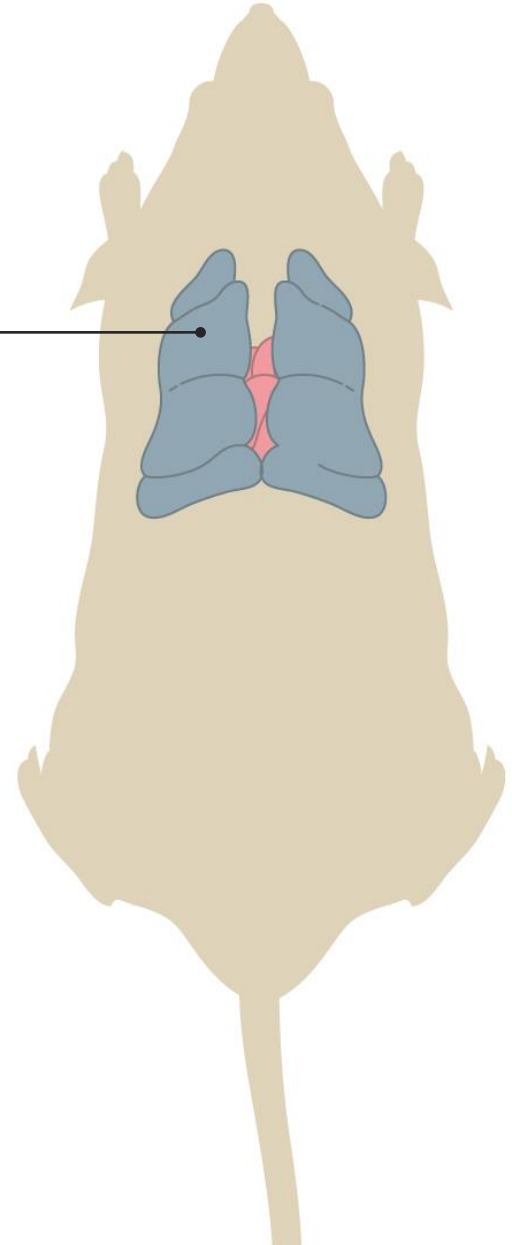


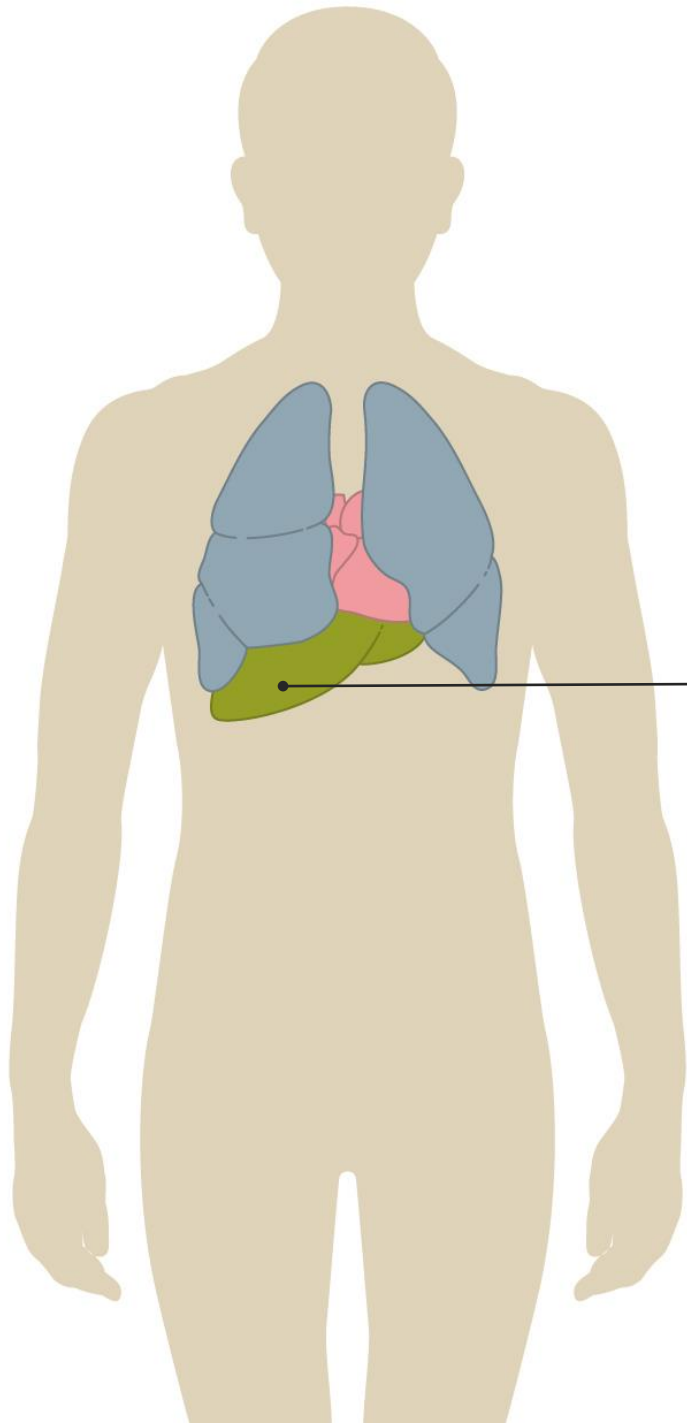
heart



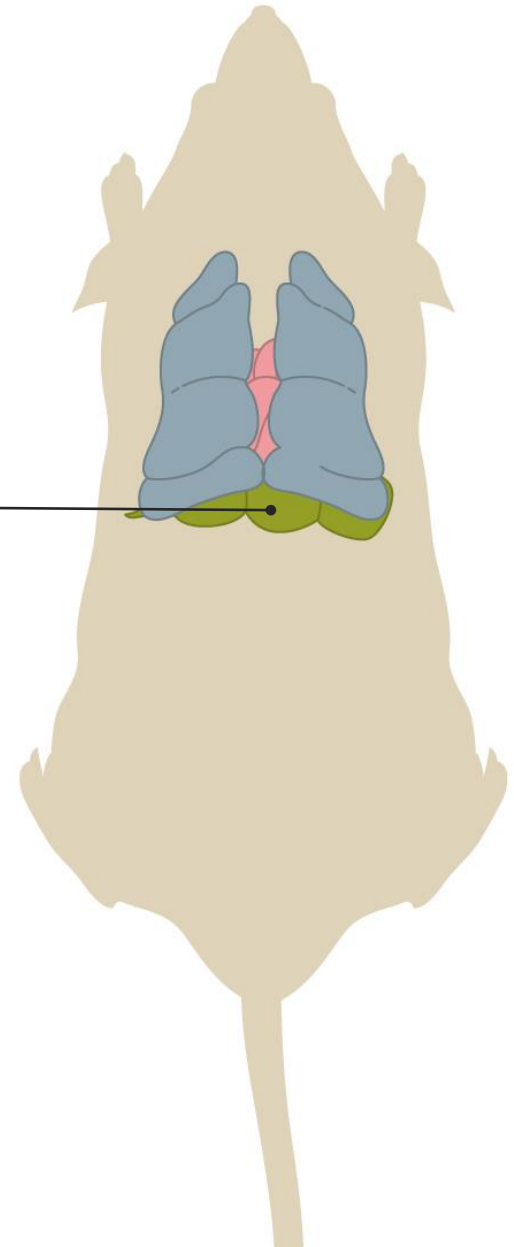


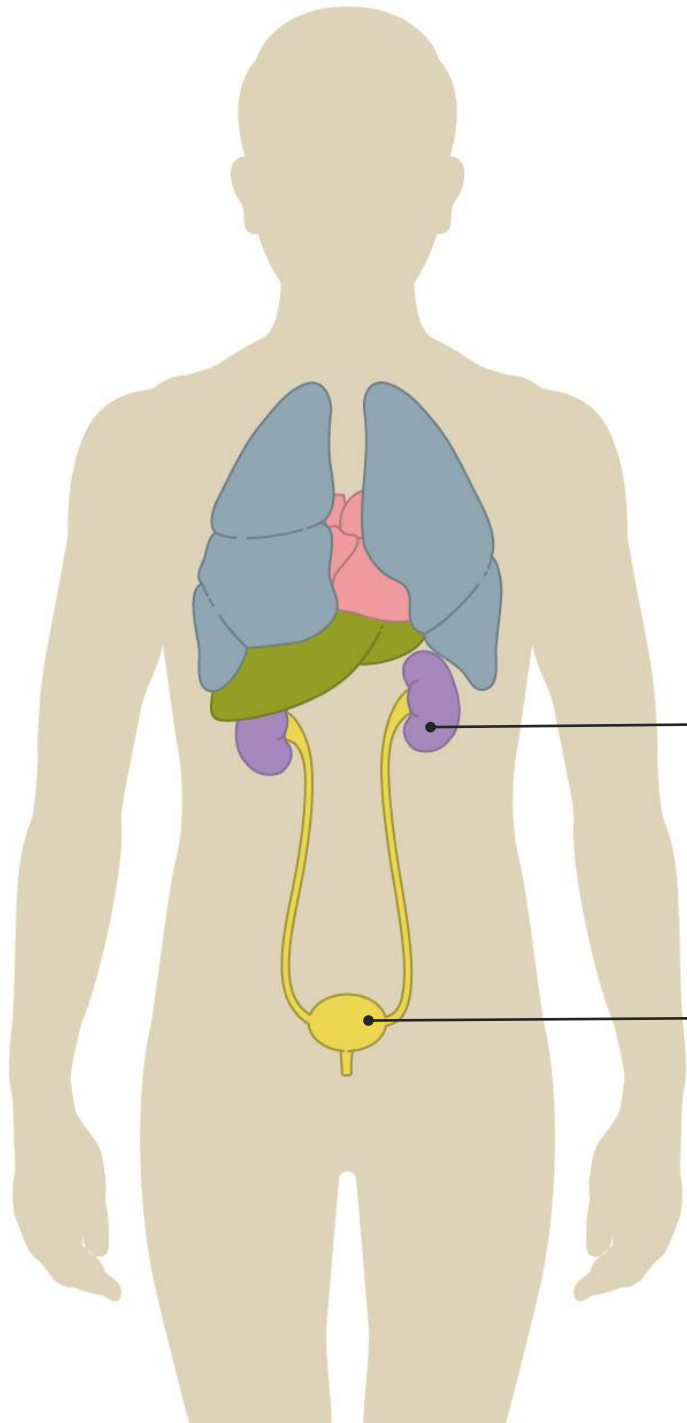
lungs





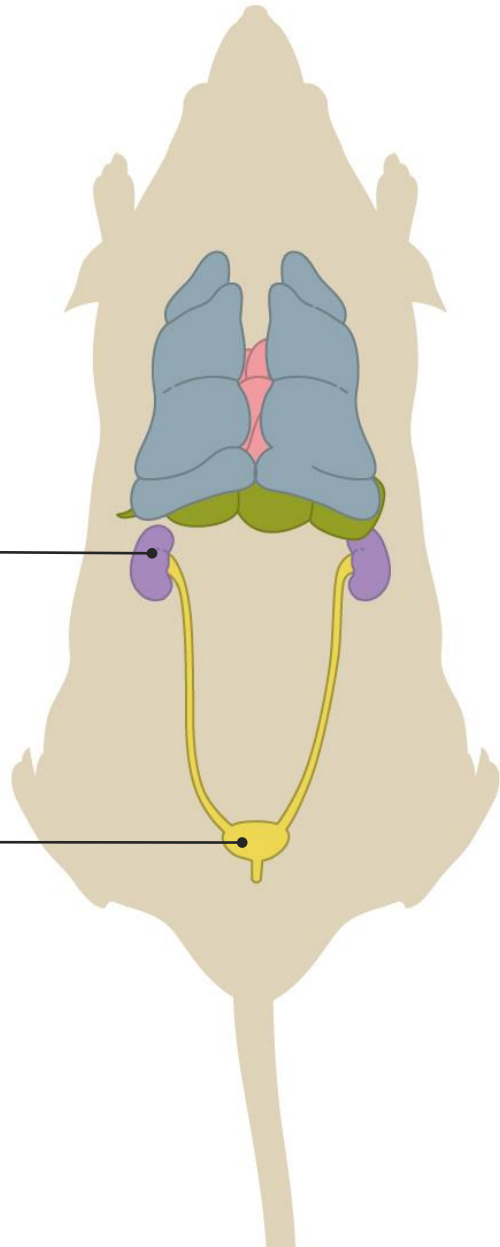
liver

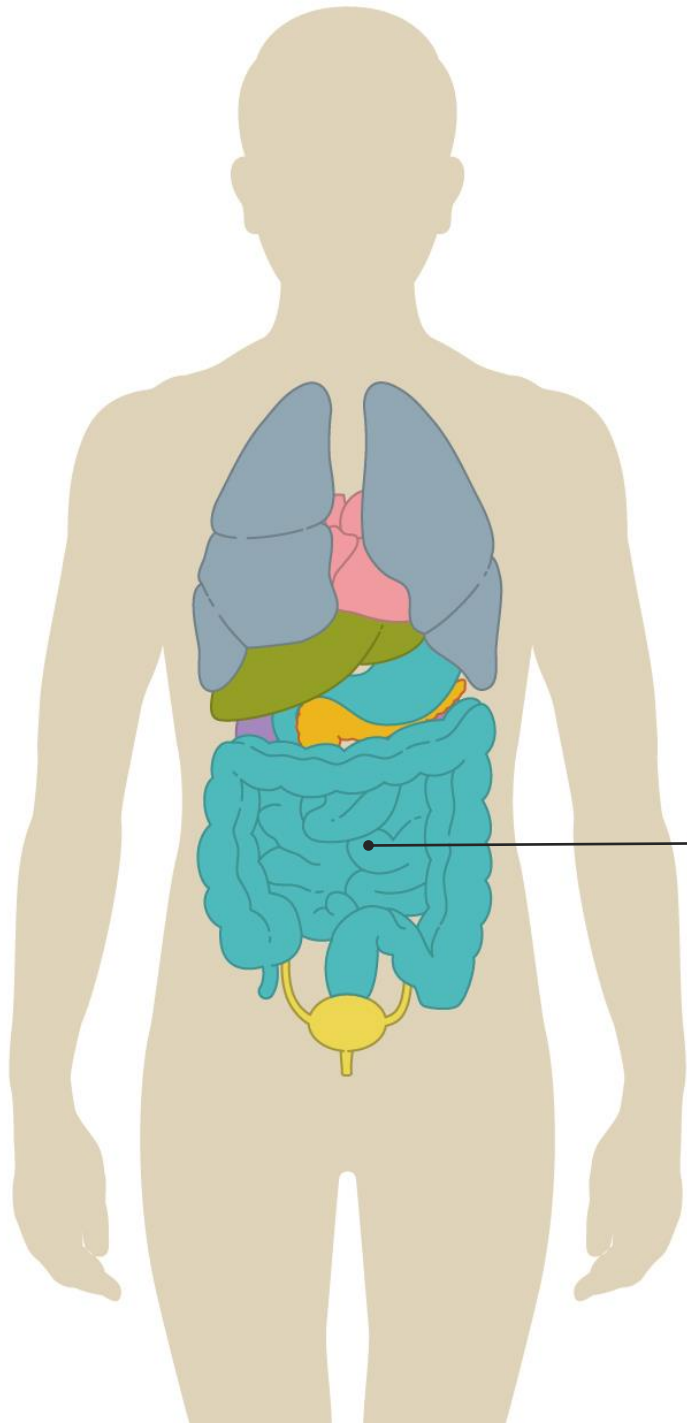




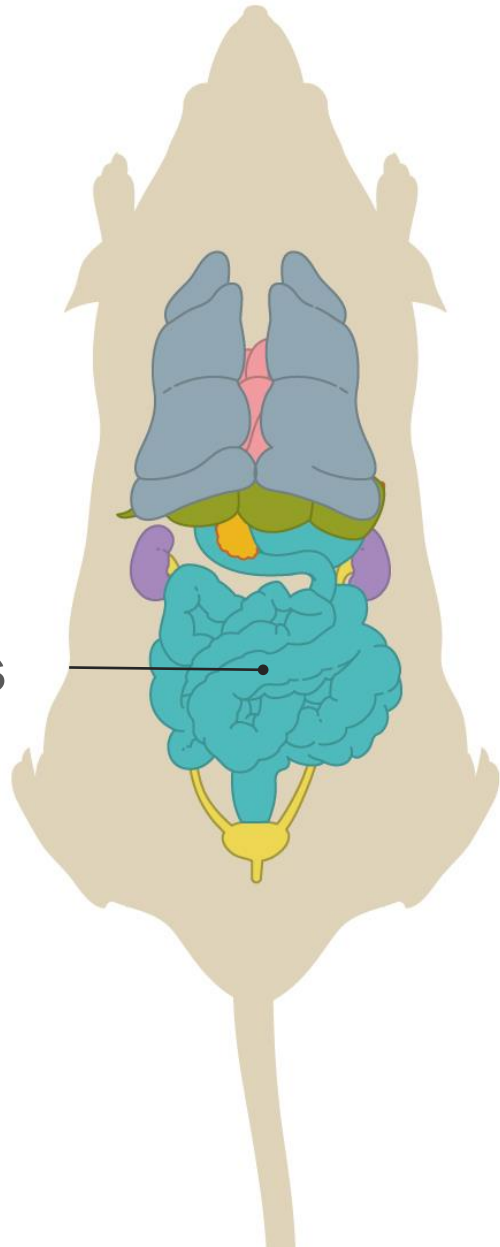
kidneys

bladder

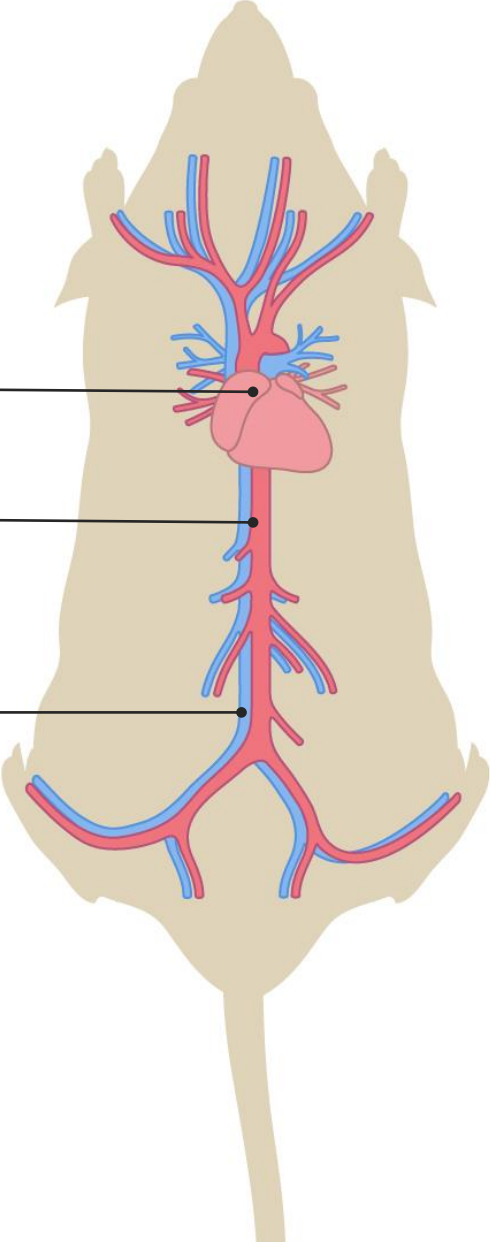
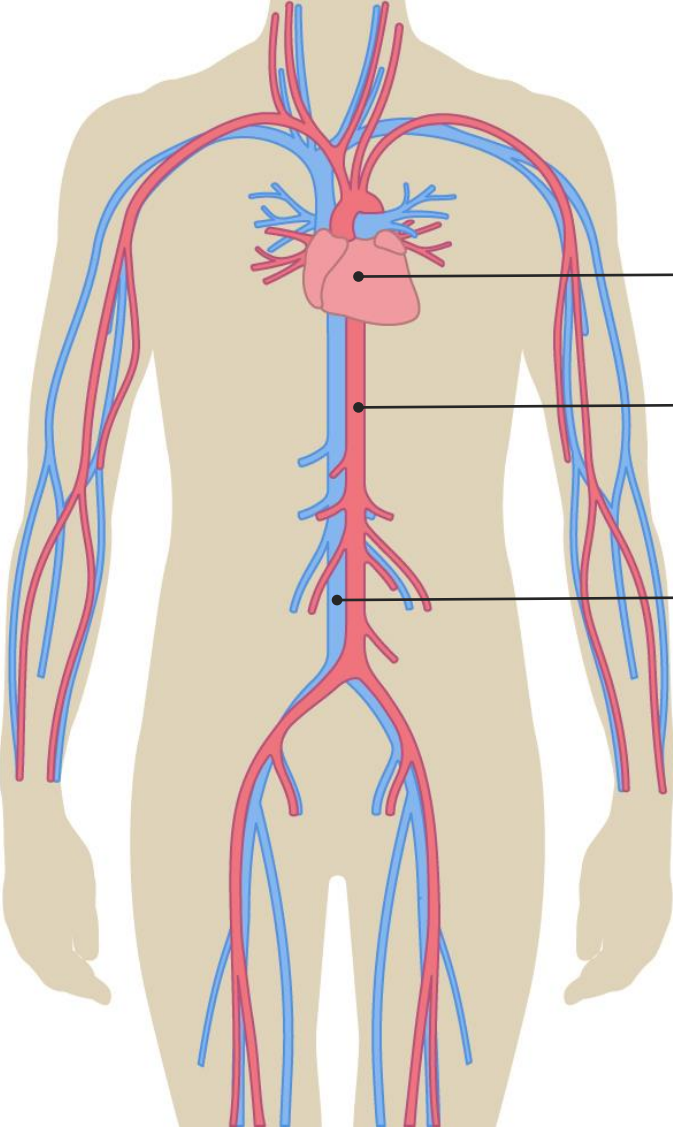




intestines



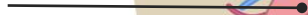
Cardiovascular system

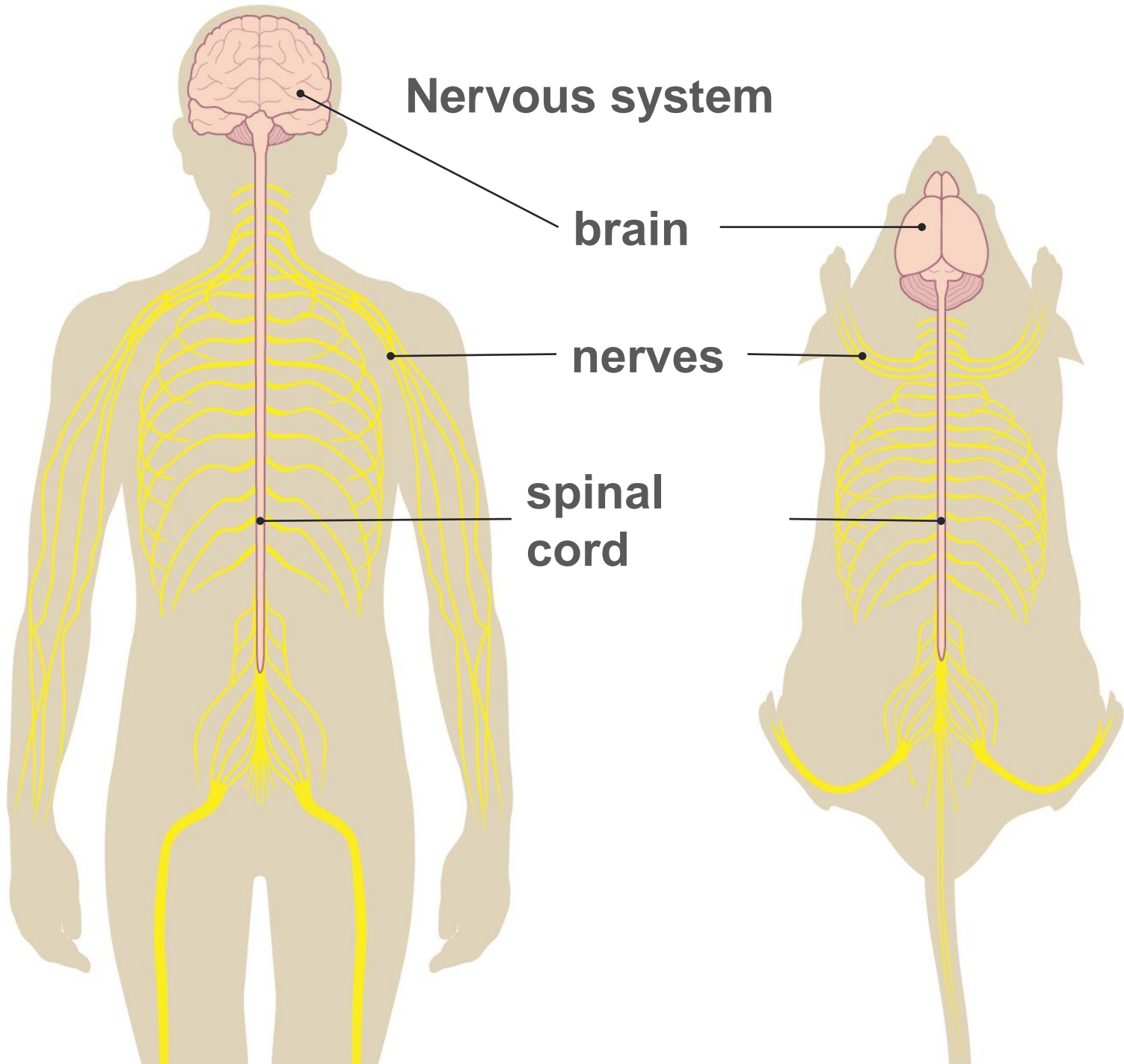


heart

arteries

veins





Nervous system

brain

nerves

**spinal
cord**